

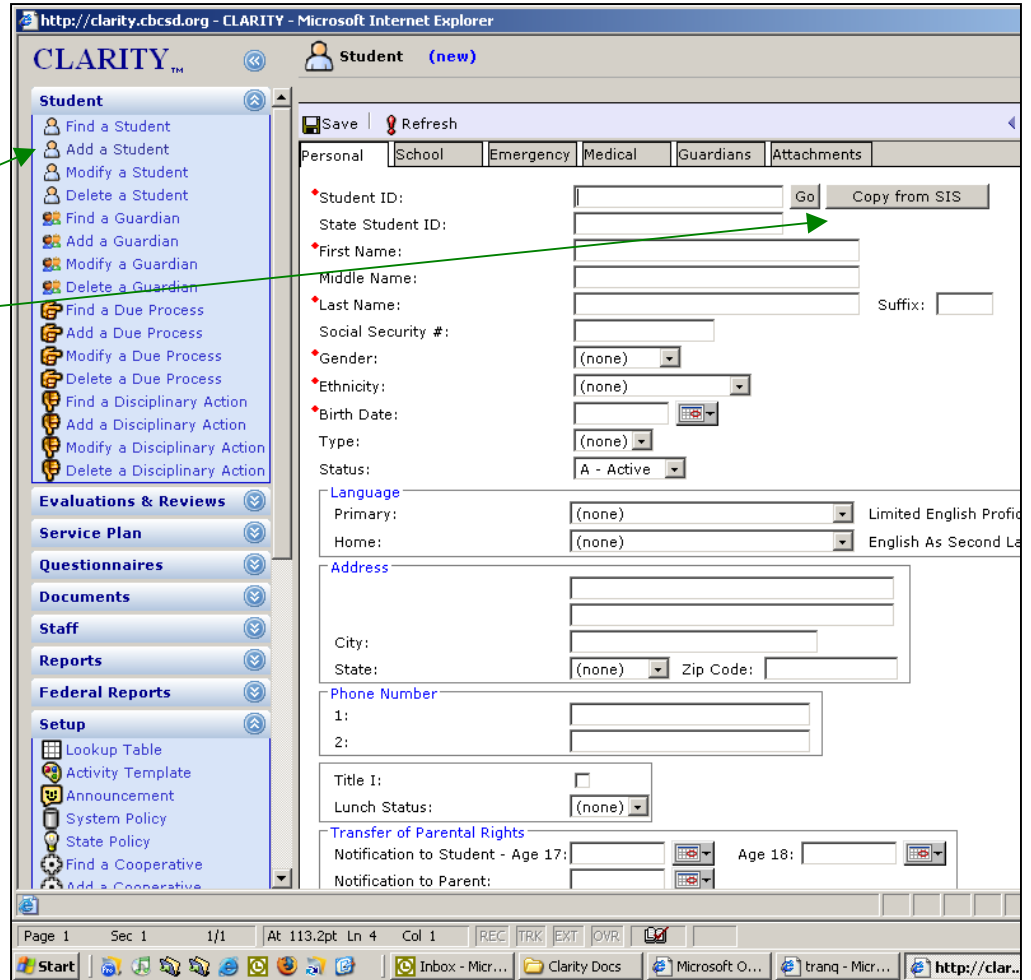
Adding Enrolled Students to Clarity

1. Log into Clarity

2. Click the Student Sidebar

3. Click "Add a Student"

4. Click "Copy from SIS"



5. You will get this screen.

6. Choose a school

7. When you click on the school of your choice, a screen will pop up giving you the option to filter for students at your school.

8. When you find the student you want to add, click on him/her.

9. This will add that student to Clarity.

10. Click OK.

11. Pat self on back.

